

IGL200

Ultra-small Fanless IGEL Thin Client

The IGL200 is an ultra-small form factor industrial IGEL thin client endpoint with dual LAN, dual Mini DisplayPorts, and Intel Dual-Core Intel processing.

onlogic.com/igl200



Easy To Connect

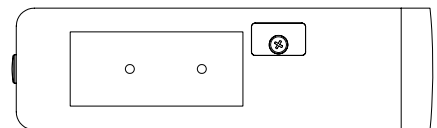
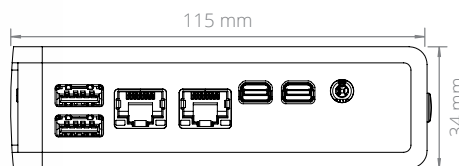
IGL200 has impressive connectivity for its size, with two USB 3.0 ports, two Gb LAN ports, two mini DisplayPorts, and a 3.5mm audio jack on the front.

Sealed, Fanless Design

Hardshell Fanless Technology seals components in a durable, ventless enclosure that cools and protects the system. Measuring at just 34 mm x 115 mm x 82 mm, the IGL200 installs virtually anywhere.

x86 Architecture

The IGL200 makes development easy and integration seamless, thanks to its x86 architecture. Backed by a stable Linux or Windows 10 OS, the IGL200 lets you focus on optimizing your application.



US Office

Phone: +1 802 861 2300 | Email: info@onlogic.com | www.onlogic.com

EU Office

Phone: +31 088 5200 700 | Email: info@onlogic.eu | www.onlogic.com

System

| | |
|---------------------|-----------------------|
| Processor | Intel Celeron N3350 |
| Processor Speed | 1.1 GHz |
| Processor Cores | 2 |
| Integrated Graphics | Intel HD Graphics 500 |
| Memory | LPDDR4 4 GB |

Rear I/O

| | |
|--------|--|
| USB | 1 USB 2.0 port |
| Serial | 1 COM Port (RS-232) |
| Power | 1 DC Input Jack (12 V) |
| Other | Power Button, power indicator LED 1 MicroSD Card slot |

Front I/O

| | |
|----------|--------------------------------------|
| Ethernet | 2 USB 3.0 Ports |
| USB | 2 Gb LAN Ports with Realtek RTL8111G |
| Video | 2 Mini-DisplayPort |
| Other | 1 Audio Jack (Mic-in, Line-out) |

Side I/O

| | |
|-------|-----------------|
| Other | 4 Antenna jacks |
|-------|-----------------|

Expansion & Features

| | |
|---------------------|--|
| Expansion & Storage | 1 PCIe Mini Card (Half-Height) MicroSD Card mSATA (Shared PCIe Mini Card Slot) |
| Features | 32 GB onboard EMMC Storage |

Mechanical

| | |
|--------------------|---------------------------------------|
| Dimensions (WxHxD) | 115 mm x 82 mm x 34 mm |
| Mounting Options | DIN-mount VESA-mount Wall-mount |

Environmental & Regulatory

| | |
|-----------------------|---|
| Operating Temperature | 0°C ~ 40°C |
| Certifications | 2002/96/EC (WEEE Directive) 2011/65/EU (RoHS 2 Directive) Additional Safety and EMC certifications pending CB scheme CE EN 55024 EN 55032 EN 62368-1 FCC 47 CFR Part 15 IEC 62368-1 IP50 UL Listed |

US Office

Phone: +1 802 861 2300 | Email: info@onlogic.com | www.onlogic.com

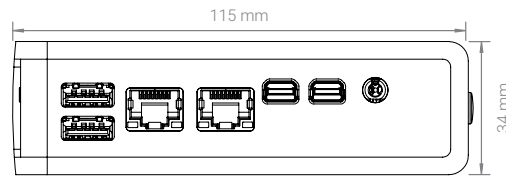
EU Office

Phone: +31 088 5200 700 | Email: info@onlogic.eu | www.onlogic.com

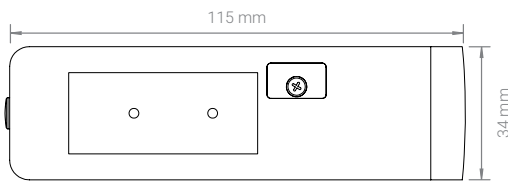
IGL200 Dimensional Drawings

Ultra-small Fanless IGEL Thin Client

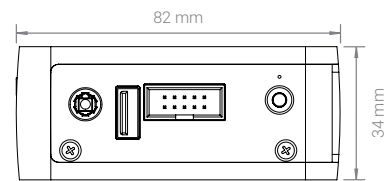
All measurements in mm



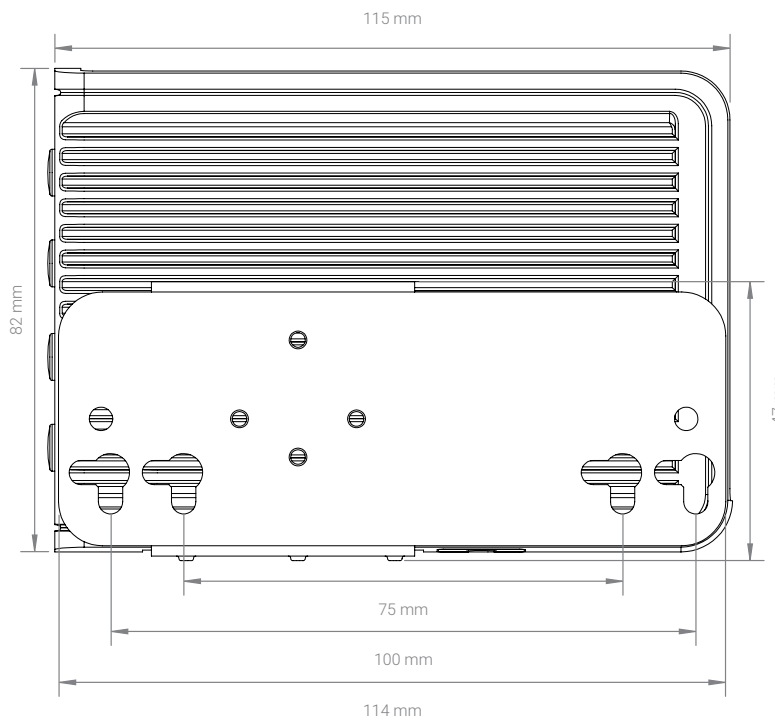
IGL200 FRONT



BACK



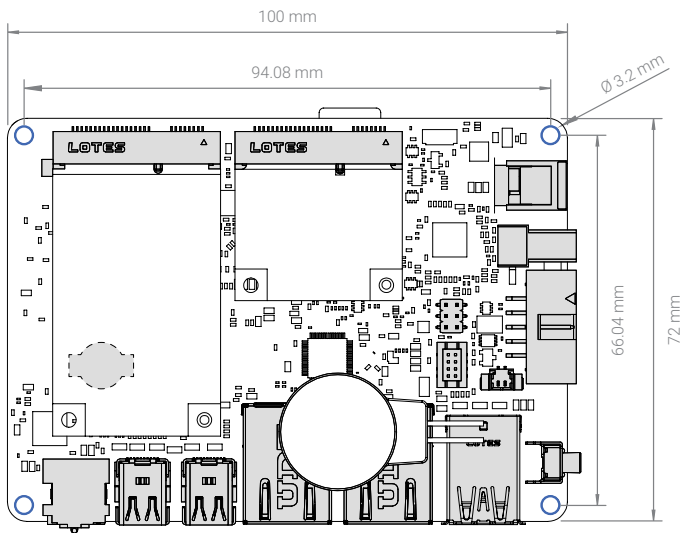
SIDE



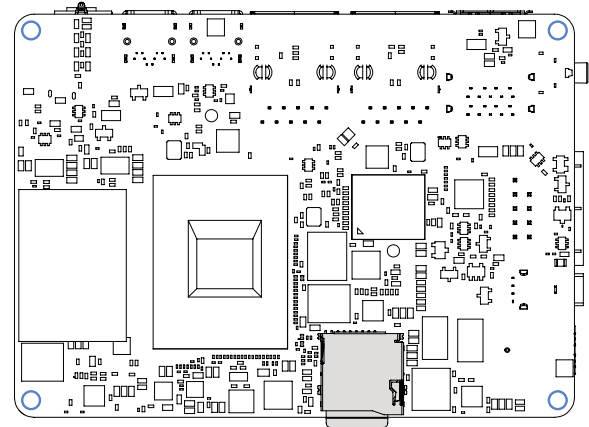
TOP

EPM162 Dimensional Drawings

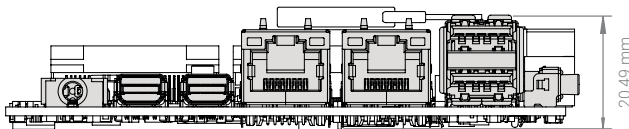
All measurements in mm



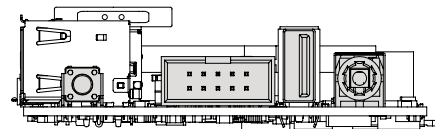
TOP



BOTTOM



FRONT



SIDE