



02

## Vehicle Mount Terminals MFT12TE

### TECHNICAL DATA

<b>Housing:</b>	Aluminium, powder-coated
<b>Resilience:</b>	Shock and Vibration according to EN60068-2 Part -6, -27
<b>Protection:</b>	IP54 (optional IP65)
<b>Operating temp.:</b>	-30 °C to 45 °C/-22 °F to 113 °F
<b>Storage temp.:</b>	-30 °C to 70 °C/-22 °F to 158 °F
<b>Rel. humidity:</b>	5 % to 95 % (in operation), non-condensing
<b>Dimensions:</b>	308 x 268 x 63 mm (W x H x D; without accessories)
<b>Weight:</b>	Approx. 3.6 kg (without accessories)
<b>Power supply:</b>	9 to 72 V DC (electrically isolated)
<b>Power consumption:</b>	Approx. 19 W (as standard), max. 70 W (freezer use)
<b>Display:</b>	12.1" color TFT display XGA with LED backlight, 1024 x 768 pixels, 500 cd/m <sup>2</sup> , 2 status LEDs

<b>Touchscreen:</b>	Resistive (surface hardness of 3H), with robust, chemically hardened beaming glass
<b>Keyboard:</b>	Virtual on-screen keyboard, 5 freely programmable function keys
<b>Graphics:</b>	Integrated graphics unit, Intel® HD Graphics Gen11LP, DirectX12 support
<b>Processor:</b>	Intel® Atom QuadCore up to 4x 3.0 GHz (x6413E, Elkhart Lake)
<b>Memory:</b>	Windows®** 10 IoT Enterprise + Windows®** 11 IoT Enterprise + IGEL OS: 8 GB RAM, 64 GB flash
<b>Operating system:</b>	Windows®** 10 IoT Enterprise, Windows®** 11 IoT Enterprise, IGEL OS
<b>BIOS:</b>	UEFI BIOS, update-capable, bootable from LAN or USB as standard
<b>Interfaces:</b>	Ethernet 1000/100/10-BaseT autoswitch, RS232, 1x USB 3.0, 3x USB 2.0, integrated speaker in speech output quality, audio/microphone input via jack plugs

## TECHNICAL DATA



### Special features:

- Integrated energy buffer for short-term bridging of power breakdowns
- Two integrated antennas (2.4 GHz/5 GHz/6 GHz)
- Fan-less design
- Device start-up and shutdown via freely definable function keys (ATX function) and via ignition
- Sunlight readable

### Options:

- Windows<sup>®\*\*</sup> 10 IoT Enterprise + IGEL OS:  
WLAN according to IEEE 802.11 a/b/g/n/ac/ax (WiFi6; 2.4 GHz/5 GHz)  
Fast Roaming according to IEEE 802.11 k/v/r  
BT-compatible close-range network 5.3
- Windows<sup>®\*\*</sup> 11 IoT Enterprise:  
WLAN according to IEEE 802.11 a/b/g/n/ac/ax (WiFi6E; 2.4 GHz/5 GHz/6 GHz)  
Fast Roaming according to IEEE 802.11 k/v/r  
BT-compatible close-range network 5.3
- WLAN Security<sup>1</sup>: WPA, IEEE802.11i (Personal and Enterprise), WPA2, WPA2-PSK  
802.1x: PEAP-MSCHAPv2, PEAP-GTC, PEAP-TLS, EAP-TLS, EAP-TTLS, EAP-FAST, LEAP
- SOTI<sup>®</sup> MobiControl
- Integrated battery for up to 1.5 hours of operation

### ACD All-in-One:

- ACD All-in-One Support & Maintenance for operating system and firmware.
- Includes firmware updates, upgrades to higher OS versions, security patches and unlimited phone support

\* Registered trademark - Intel  
 \*\* Registered trademark - Microsoft  
 1 Standard codification validated by ACD.  
 Subject to technical modifications.

# OPTIONS & ACCESSORIES



Power pack MFT1x



Voltage Supply Cable (3 wired)



MFT10x/MFT12x Mounting kit flat Standard



MFT10x Mounting kit RAM Mount



MFT12x/MFT15x Mounting kit RAM Mount



MFT1x Mounting kit RAM Mount with holding clip



MFT10x/MFT12x Mounting kit flat Quick Change System



MFT10x Mounting kit RAM Mount Quick Change System



MFT12x/MFT15x Mounting kit RAM Mount Quick Change System



Quick Change System Power Supply Cable (3 wired)



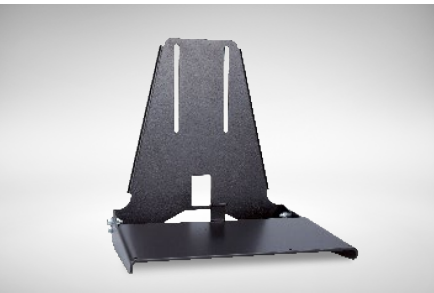
Quick Change System Adapter (3 wired)



MFT1x Adapter bracket



MFT1x Mounting kit Adapter bracket



MFT1x Keyboard Mounting Device - without keyboard



ML Keyboard black

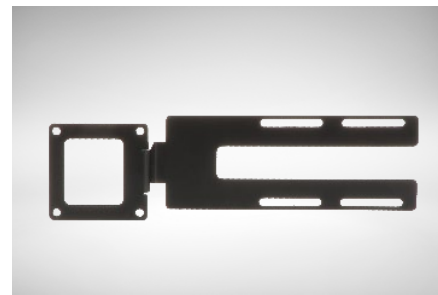
## OPTIONS & ACCESSORIES



MFT1x sideward Keyboard with USB-Hub



MFT1x sideward Keyboard without USB-Hub



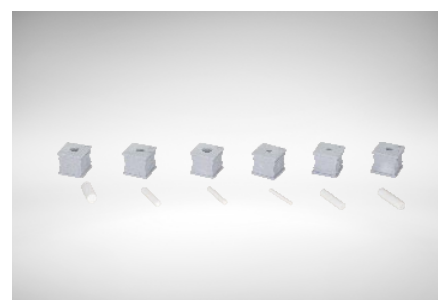
Mounting Kit for MFT1x sideward Keyboard



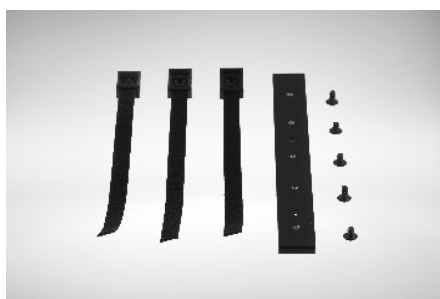
External magnetic base antenna  
2.4 GHz/5 GHz/6 GHz



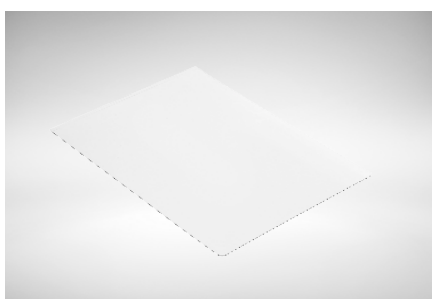
Interface cover IP65



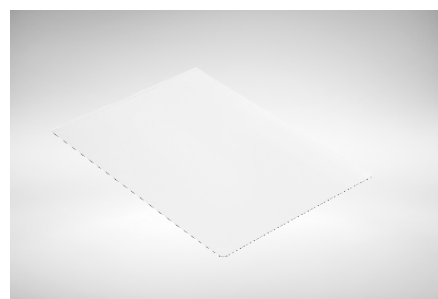
Spout Set for interface cover IP65



MFT1x strain relief (for IP65 device variant)



MFT10x screen protector for resistive touch  
screen



MFT12x screen protector for resistive touch  
screen

Configure your equipment directly in the online configurator at:

<https://www.acd-gruppe.de/en/vehicle-terminal-configurator/>

Our sales department will also be happy to help you with the selection under the telephone number +49 7392 708-499